

Netrust Digital Signer
Installation Guide
CORENET
Version 3.3

Netrust Digital Signer

Installation Guide

Version: 3.2

Prepared By: Marcus Cher

Last Updated: 2nd Jan 2014

Revision History

Date	Version	Description	Author
8 th September 2008	1.0	First Issue	Netrust
20 th October 2008	2.0	Updates	Netrust
12 th October 2009	3.0	Update for NDS 2.0	Netrust
09 th March 2010	3.1	Update for NDS 2.1	Netrust
15 th April 2013	3.2	NDS 3.0	Netrust
2nd Jan 2014	3.3	NDS 3.0	Netrust

Table of Content

1.0 INTRODUCTION.....	5
2.0 SYSTEM REQUIREMENT.....	5
2.1 HARDWARE.....	5
2.2 OPERATING SYSTEMS SUPPORTED.....	5
2.3 SOFTWARE REQUIREMENT.....	5
3.0 NOTATIONS.....	5
4.0 OBTAINING NETRUST DIGITAL SIGNER.....	6
4.1 DOWNLOAD ONLINE	6
4.2 OBTAINING THE CD FROM NETRUST	9
5.0 INSTALLATION GUIDE.....	10
5.1 INSTALLATION FOR FIRST TIME USER (64-BIT).....	10
5.2 INSTALLATION FOR FIRST TIME USER (32-BIT).....	12
5.3 INSTALLATION FOR EXISTING USER.....	14
6.0 MISCELLANEOUS.....	19
6.1 INSTALLING WINDOWS INSTALLER 3.1.....	19
6.2 INSTALLING .NET FRAMEWORK 2.0.....	20
6.3 CHECKING JAVA VERSION.....	21

1.0 Introduction

This document is to teach user how to install Netrust Digital Signer version 3.1 on Windows 7 and 8 / Windows Vista / Windows XP / Windows 2000 SP4

2.0 System Requirement

2.1 *Hardware*

Pentium IV & above with 512 RAM. Software installation requires up to 400MB.

2.2 *Operating Systems Supported*

Windows XP / Windows Vista / Windows 7/ Windows 8

2.3 *Software Requirement*

Microsoft .Net Framework 2.0 SP2, Windows Installer 3.1, JRE v1.6 and above

3.0 Notations

[Folder Name] : Name of Folder

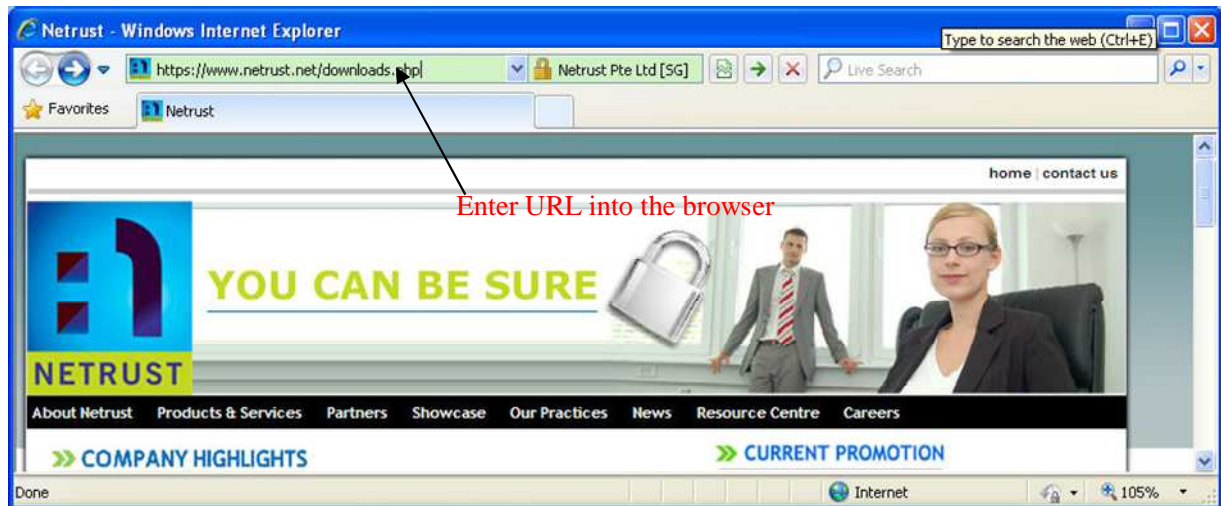
{File Name} : Name of File

<Button Name> : Name of Button

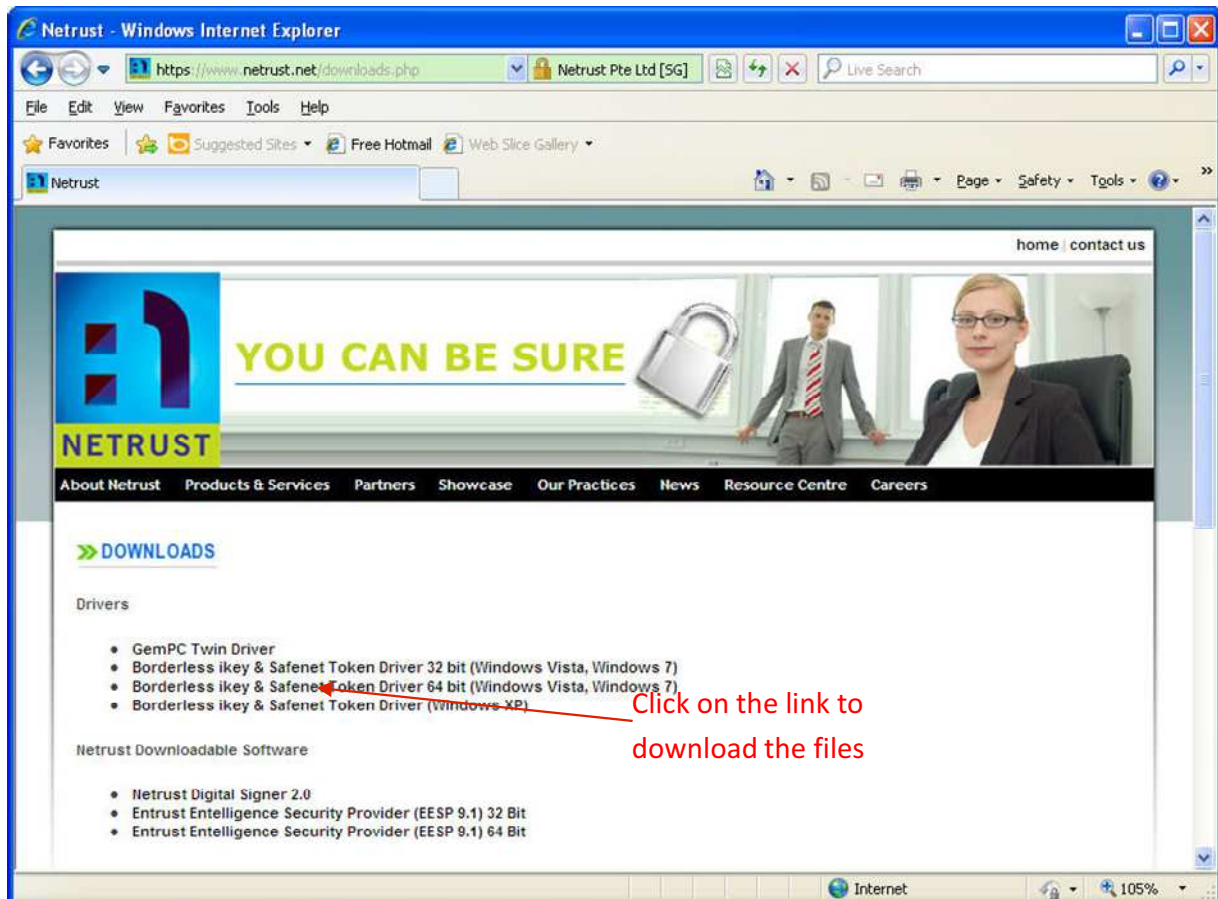
4.0 Obtaining Netrust Digital Signer

4.1 Download Online

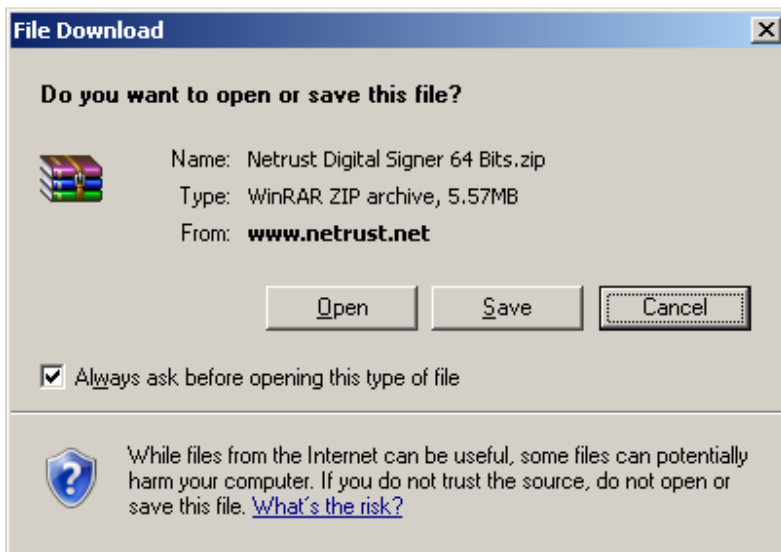
Step 1: Connect to <https://www.netrust.net/downloads.php> using a web browser (e.g. Internet Explorer/Firefox/etc).



Step 2: Click on the link to download the files



Step 3: Click on <Save>/<OK>



Step 4: Unzip the files (e.g. Winzip/Winrar/etc) and click <OK> to save the designated location.



4.2 *Obtaining the CD from Netrust*

You can obtain the Netrust Digital Signer CD from Netrust.

Netrust is located at:

Address : 70 Bendemeer Road, #05-03, Luzerne, Singapore 339940

Tel : (65)62121388

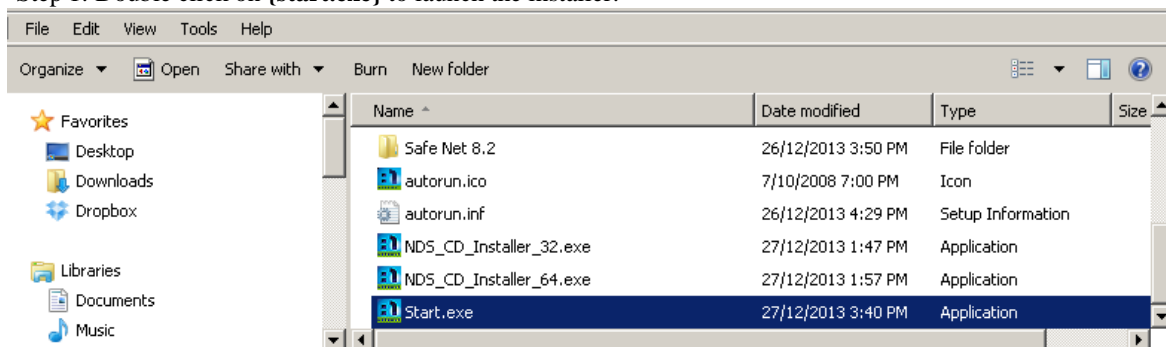
Fax : (65)62121366

Web : <https://www.netrust.net/contactus.php>

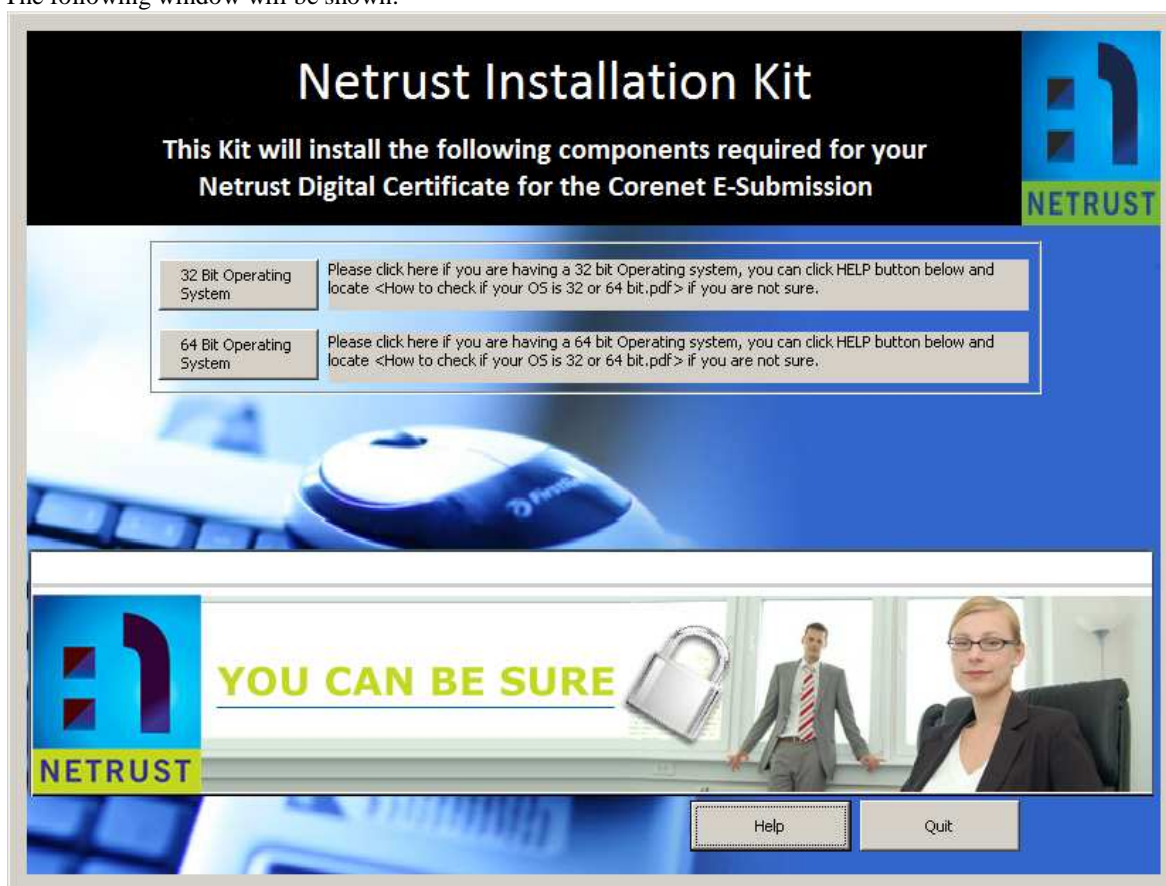
5.0 Installation Guide

5.1 Installation for First Time User

Step 1: Double click on {start.exe} to launch the installer.

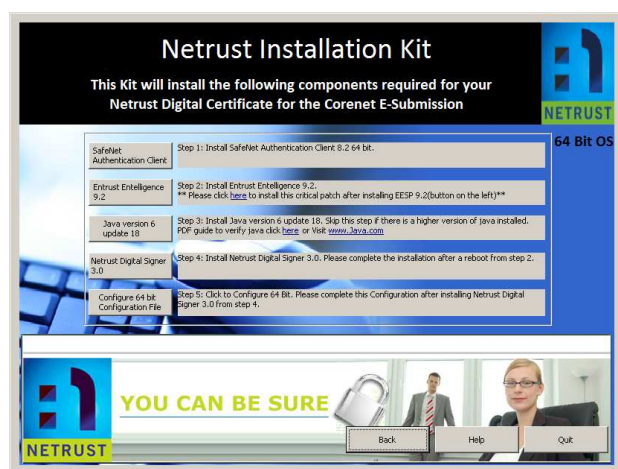


The following window will be shown:

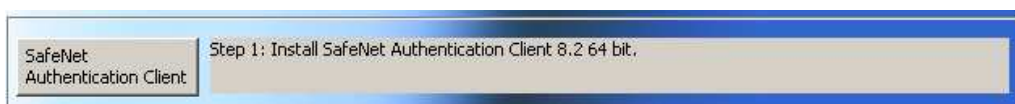


Decide on which bit your computer belongs to by checking on the "How to check if your OS is 32 or 64 bit.pdf" guide. Click on of the following , example "64 Bit Operating System"

The following window will be shown:



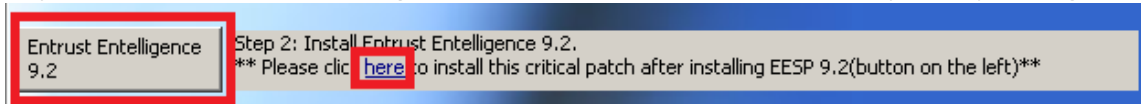
Step 2: Install the Safenet Authentication Client 8.2 64 bit(Click the button on the left, show below).



Click on <SafeNet Authentication Client>

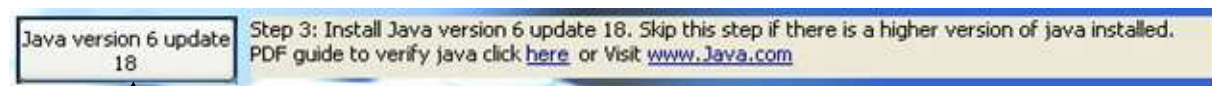
Step 3: Safenet Authentication Client wizard will start, follow the instruction and complete the installation.

Step 4: Next Install Entrust Entelligence 9.2 and after installation, install the patch by clicking "[here](#)".



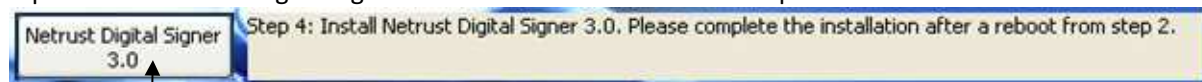
Step 5 : Select "Typical" settings to complete the installation

Step 6: Next Install Java . Skip this step if you have a higher version installed. **Refer to 6.3 Checking Java version.**



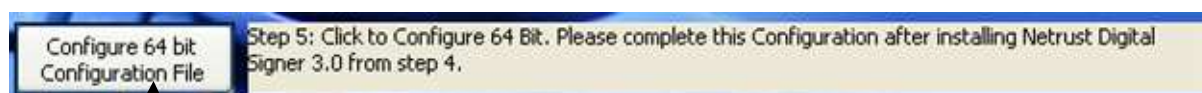
Click on <Java version 6 update 18>

Step 7: Install Netrust Digital Signer 3.0 after Java installation is completed.



Click on <Netrust Digital Signer 3.0>

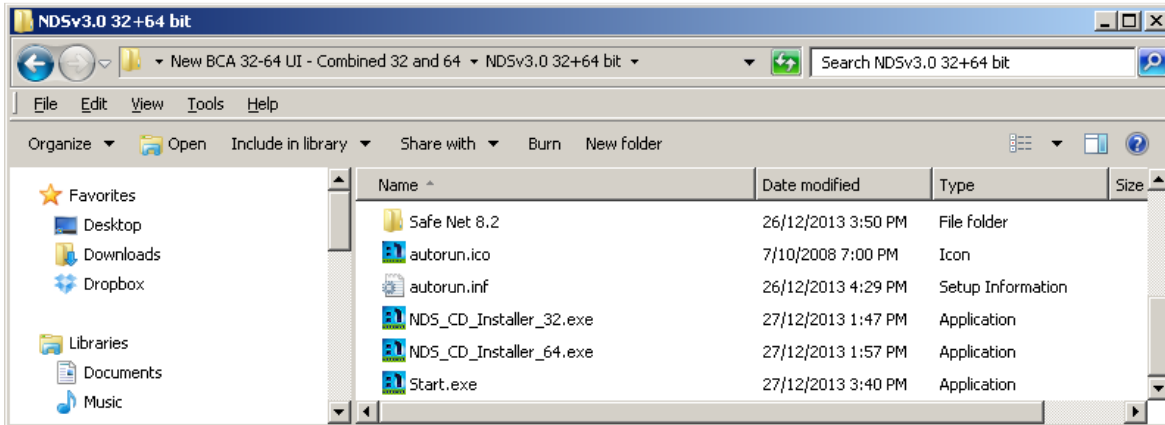
Step 8: Lastly configure windows for 64-bit windows.



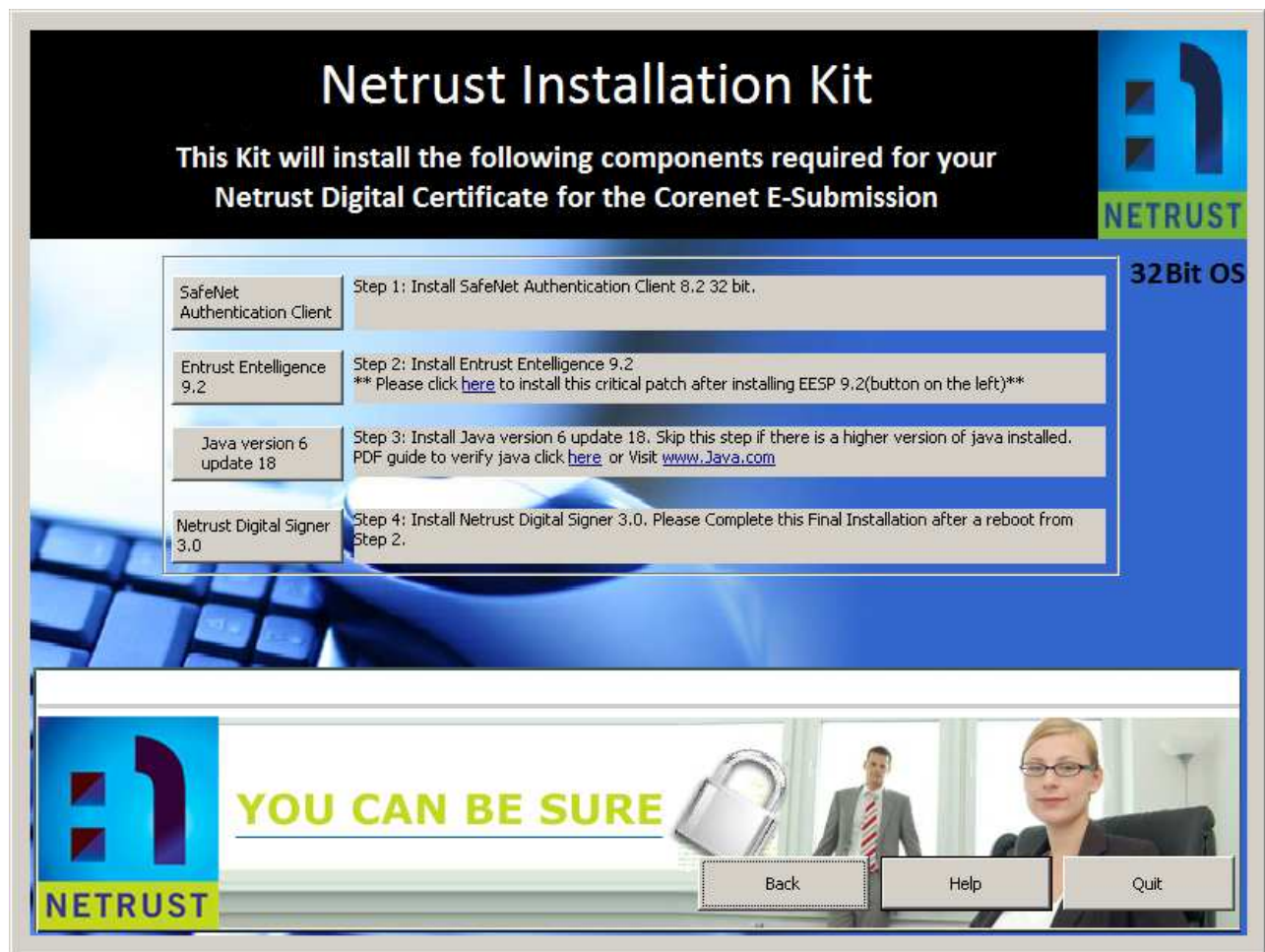
Click on <Configure 64 bit Configuration File>

5.2 Installation for First Time User (32-bit)

Step 1: Double click on {start.exe} to launch the installer.



The following window will be shown:



Step 2: Install the Safenet Authentication Client 8.2 32-Bit.

SafeNet
Authentication Client

Step 1: Install SafeNet Authentication Client 8.2 32 bit.

Click on <Safenet Authentication Client>

Step 3: Safenet Authentication Client wizard will start, follow the instruction and complete the installation.

Step 4: Next Install Entrust Entelligence 9.2 and after installation, install the patch by clicking "[here](#)"

Entrust Entelligence
9.2

Step 2: Install Entrust Entelligence 9.2.

** Please click [here](#) to install this critical patch after installing EESP 9.2(button on the left)**

Click on <Entrust Entelligence 9.2> and next click <here>.

Step 5 : Select "Typical" settings to complete the installation

Step 6: Next Install Java . Skip this step if you have a higher version installed. **Refer to 6.3 Checking Java version.**

Java version 6 update
18

Step 3: Install Java version 6 update 18. Skip this step if there is a higher version of java installed. PDF guide to verify java click [here](#) or Visit www.java.com

Click on <Java version 6 update 18>

Step 7: Lastly Install Netrust Digital Signer 3.0 after Java installation is completed

Netrust Digital Signer
3.0

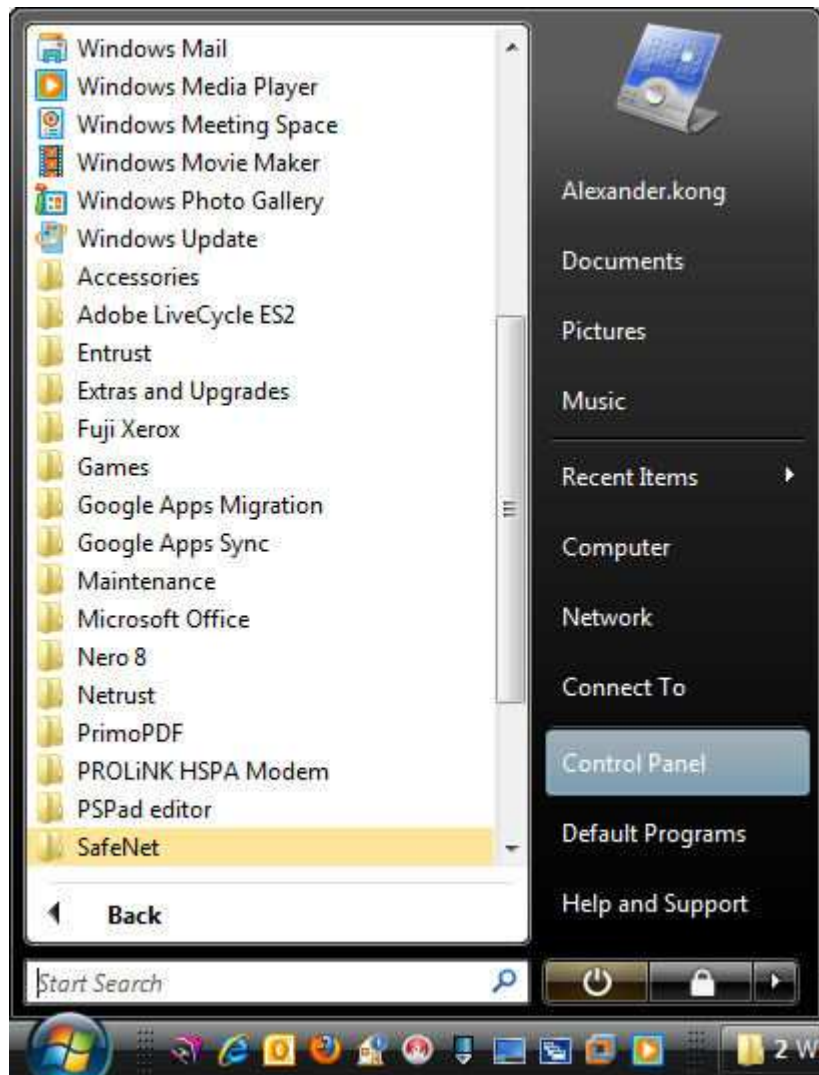
Step 4: Install Netrust Digital Signer 3.0. Please complete the installation after a reboot from step 2.

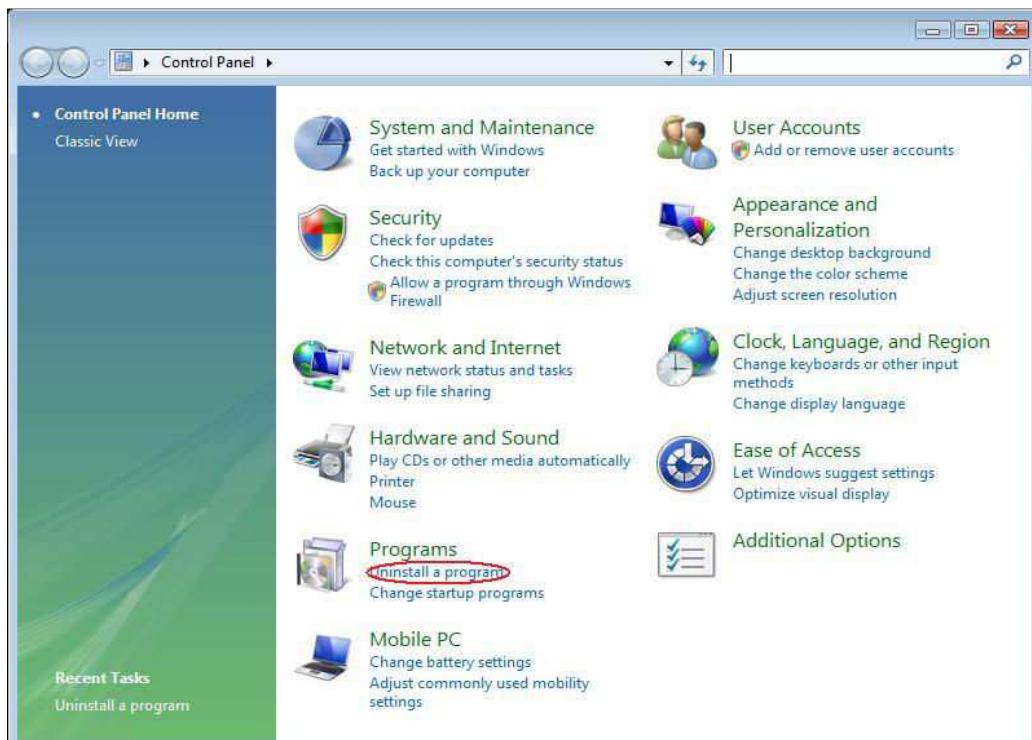
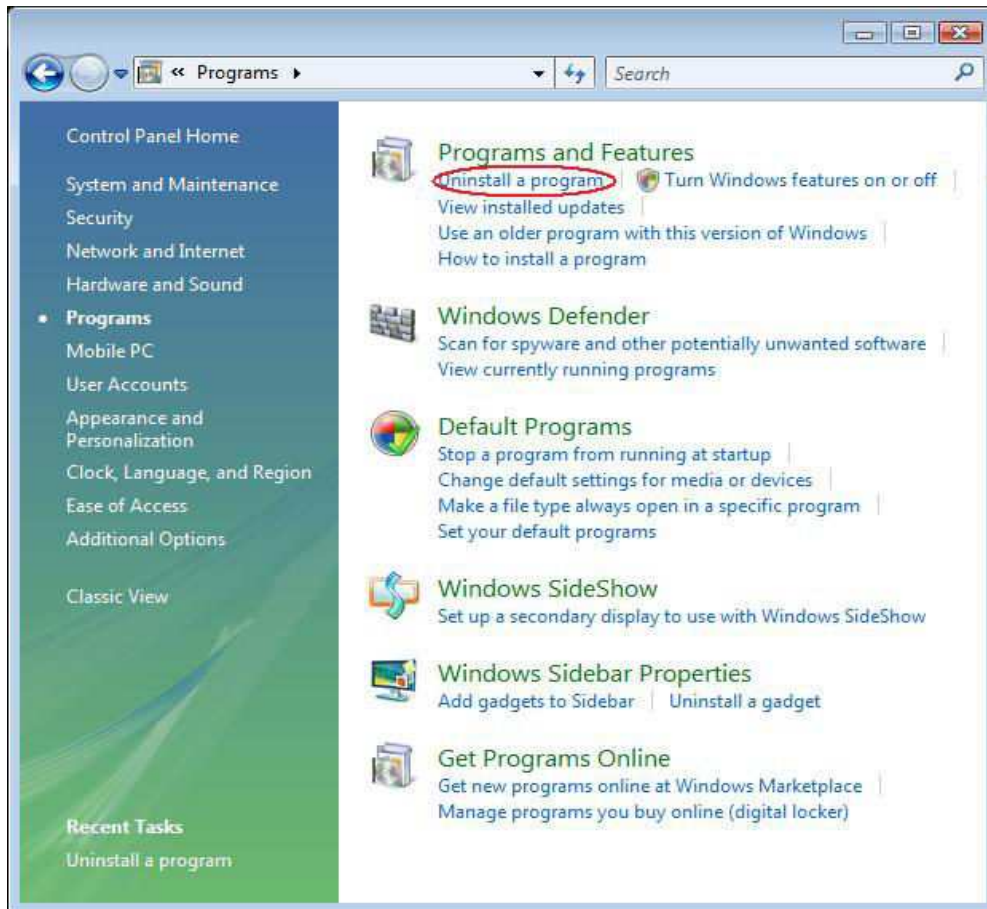
Click on <Netrust Digital Signer 3.0>

5.3 Installation for Existing User

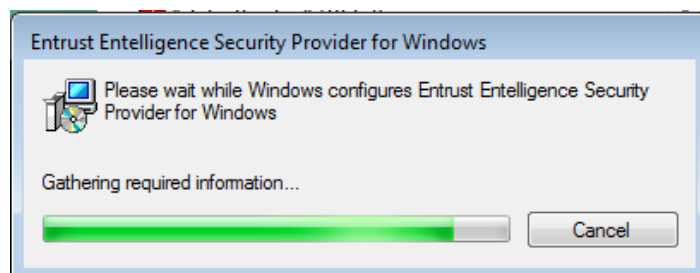
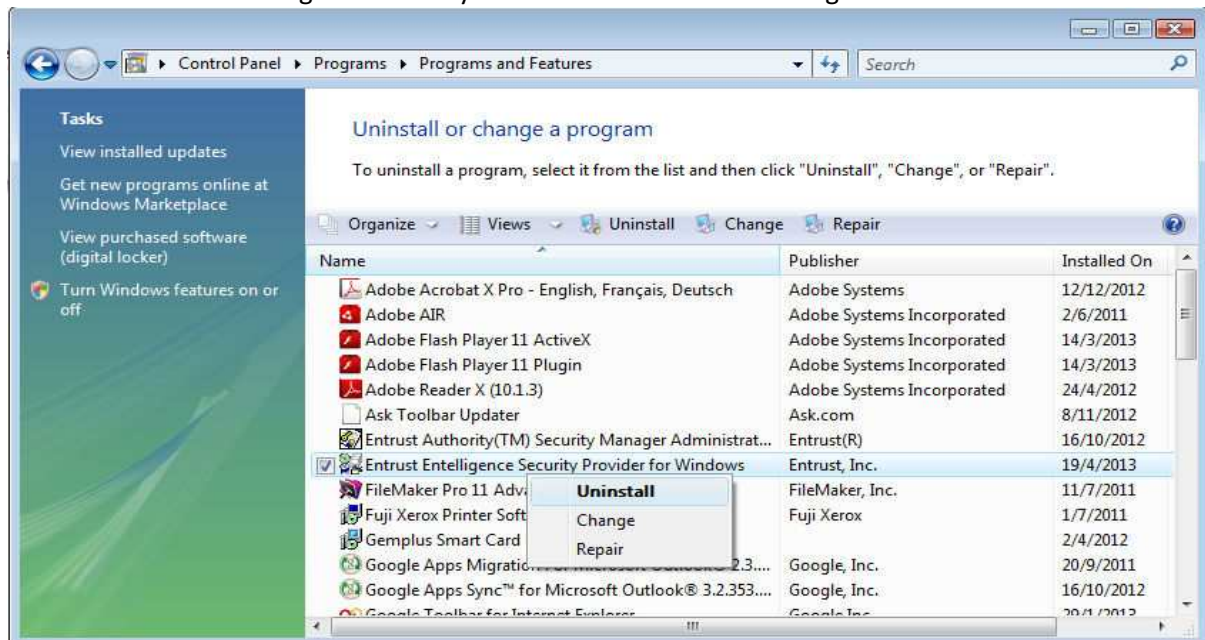
Step 1: First uninstall Entrust Entelligence 9.2

- Click on <Windows Button> button located at the bottom left corner of your screen and click on <Control Panel>





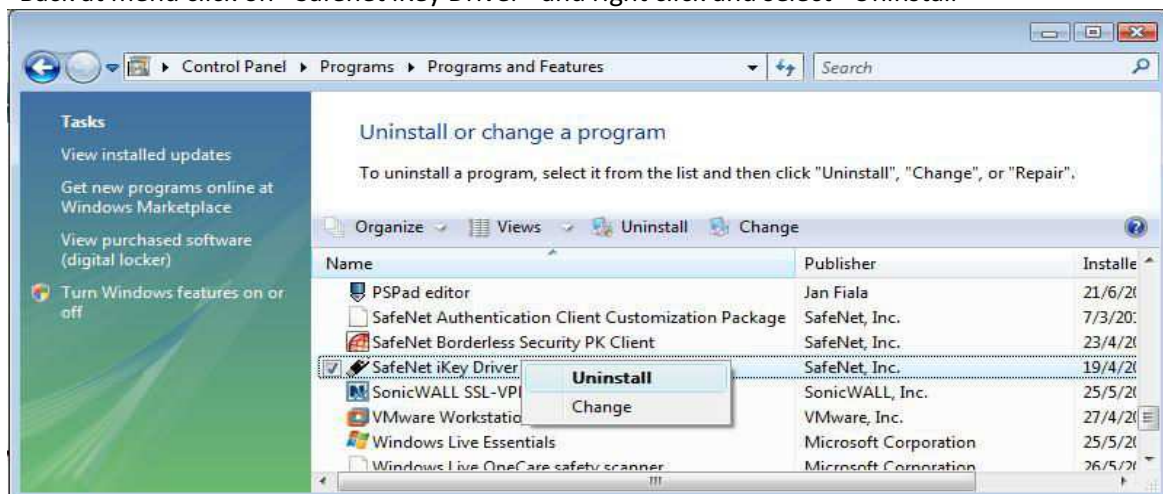
- Click on <Entrust Entelligence Security Provider for Windows> and right click and select <Uninstall>



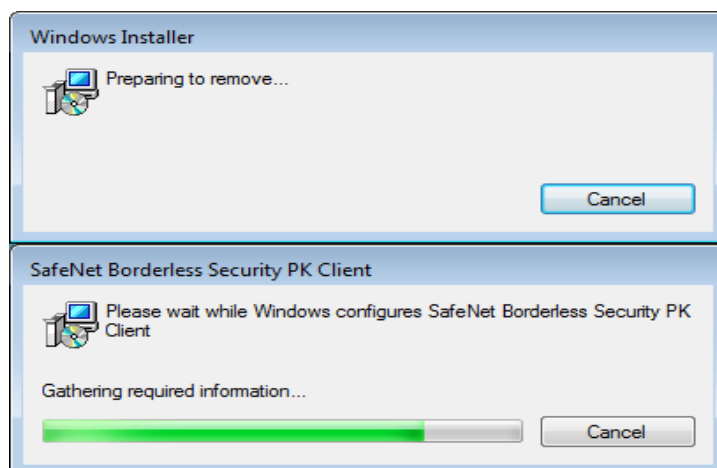
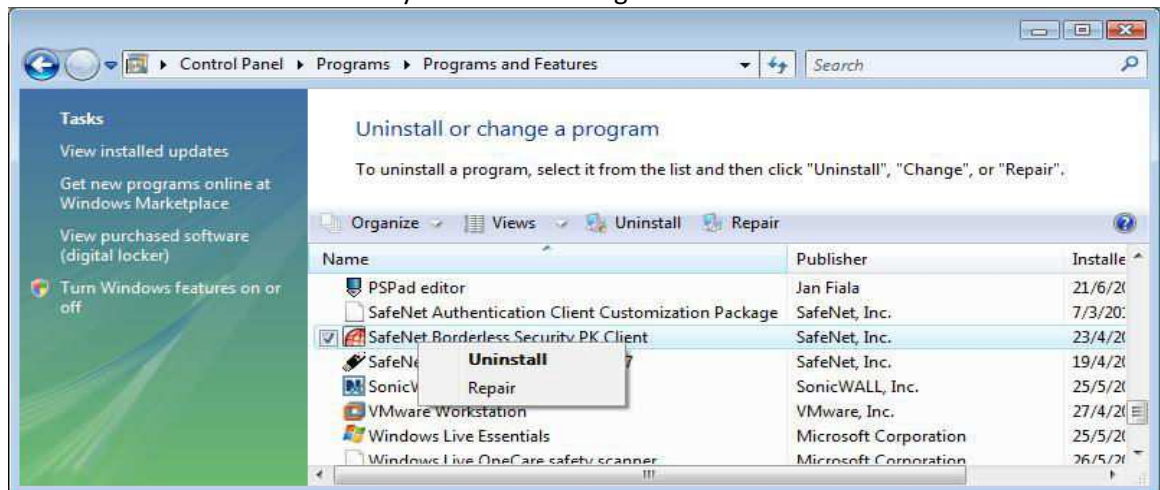
- Return back to “Uninstall or Change a program” menu when uninstallation is complete

Step 2: Uninstall Borderless Security Client & Safenet iKey Driver

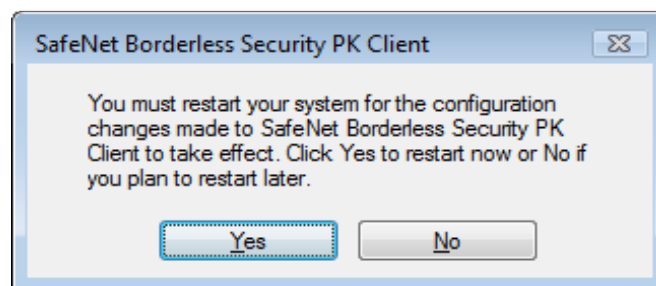
- Back at menu click on <Safenet iKey Driver> and right click and select <Uninstall>



- Then Click on <Safenet Borderless Security PK Client> and right click and select <Uninstall>



- Click on <Yes> to complete the un-installation and restart the PC.



Step 3: After all the un-installation is done proceed to install the new software. Refer to the following for appropriate windows version

- **5.1 Installation for First Time User (64-bit) – For Windows Vista or 7 64-bit**
- **5.2 Installation for First Time User (32-bit) – For Windows Vista or 7 32-bit**

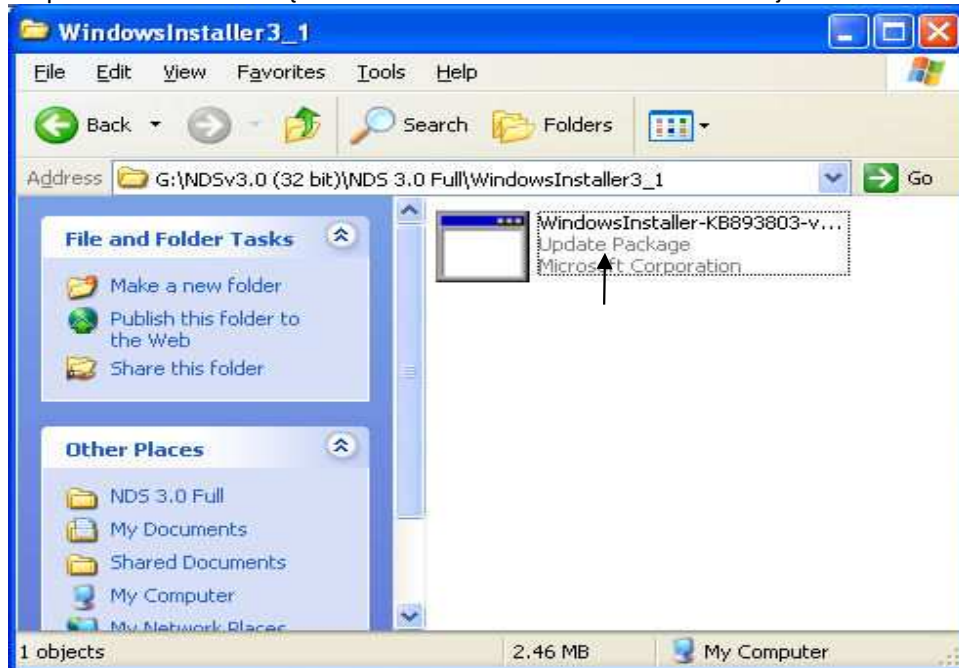
6.0 Miscellaneous

These installations should be done by your administrator

6.1 Installing Windows Installer 3.1

Step 1: Go to [NDS 3.0 Full]\[WindowsInstaller3_1]\

Step 2: Double Click on {WindowsInstaller-KB893803-v2-x86.exe}

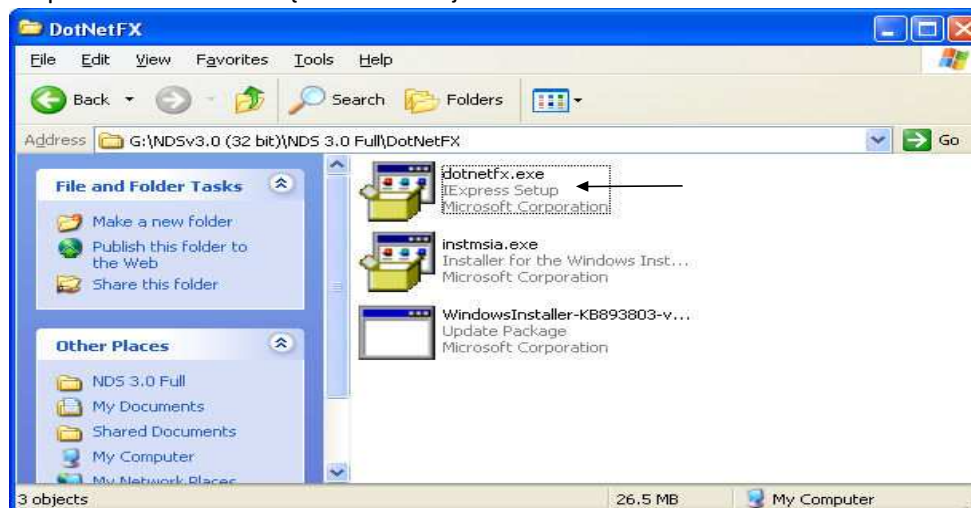


Step 3: Window Installer 3.1 wizard will start, follow the instruction and complete the installation.

6.2 Installing .Net Framework 2.0

Step 1: Go to [NDS 3.0 Full]\[DotNetFX]\

Step 2: Double Click on {dotnetfx.exe}



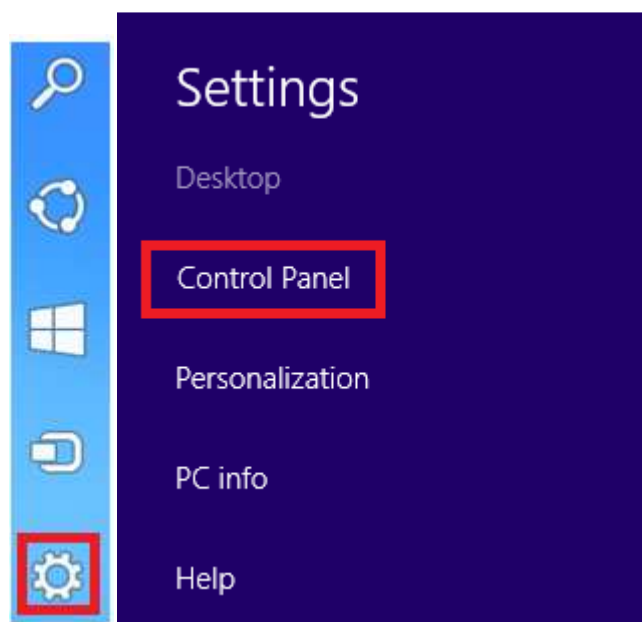
Step 3: .Net Framework 2.0 wizard will start, follow the instruction and complete the installation.

For Windows 8 Users, please do not use the installer(it will fail).

-Look for "enabling the .net Framework 3.5 in Control Panel"

To go to Control panel.

mouse over your mouse cursor on the top right hand of your desktop, you should see this screen.



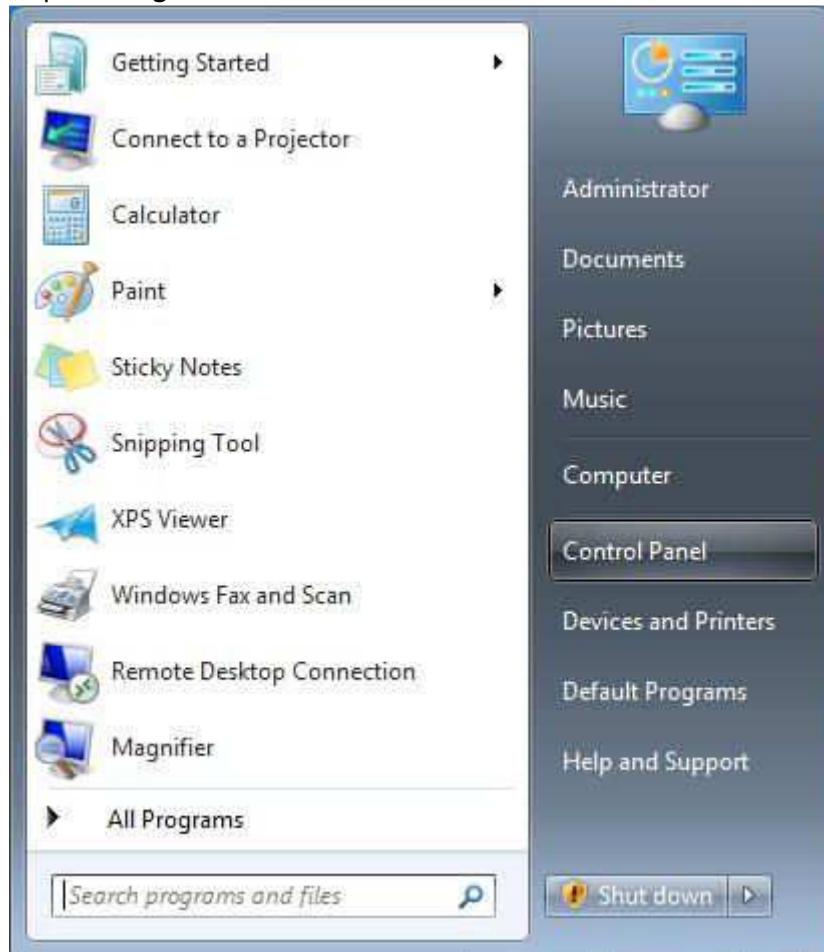
Now, Please refer to the link below to install .net Framework 3.5.

<http://msdn.microsoft.com/en-us/library/hh506443%28v=vs.110%29.aspx>

6.3 Checking Java Version

For existing users you may find that Java is already installed on the computer. The following steps will help to identify the Java version installed on the computer.

Step 1: First go to the Control Panel under the start menu.

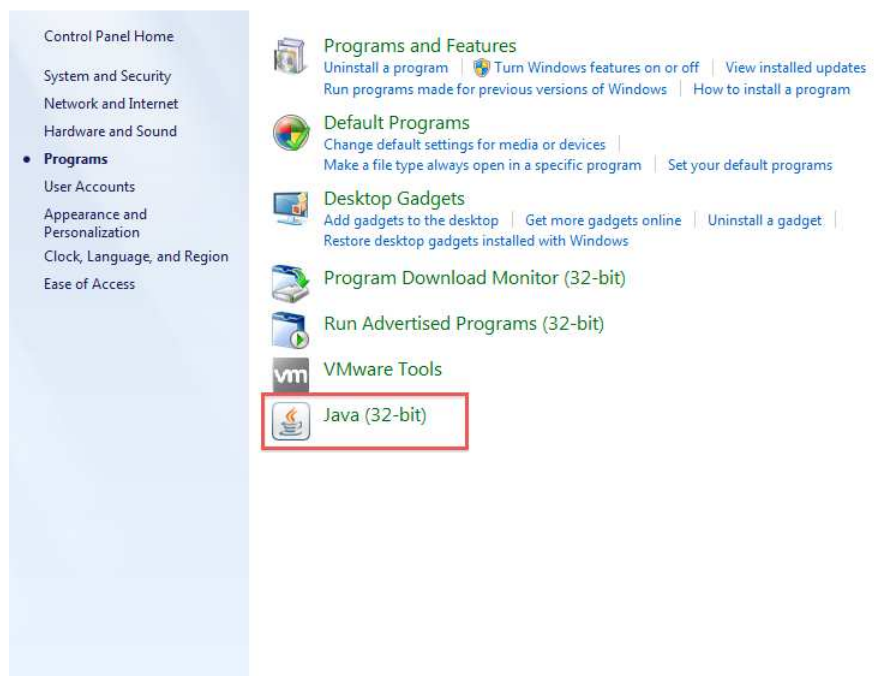


Step 2 : Find the “Programs” Icon and click it.

If you can't find the icon proceed immediately to Step 3).



Step 3) Find and click the “Java (32-bit)” icon.



Step 4) Next click the “About...” button from the “General” tab



Step 5) Lastly find the version information beneath the Java icon. For the example below it would “Java version 6 Update 18”.

